







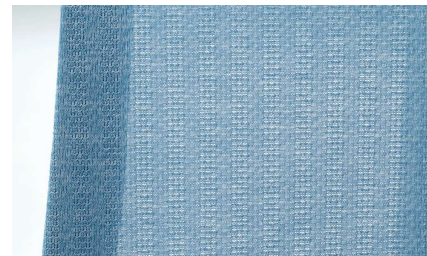
## DESIGN

The backrest's pivot structure enables the chair to smoothly follow the lateral movements of the shoulders and upper body.



The comfortable bucket seat design hugs and stabilizes the lower torso.

The stylish yet functional monoform design provides good support for your lower back and looks like the back and the seat are one.



Japanese kasuri-style fabric will give a casual feel to the interior of your office.

## FUNCTION

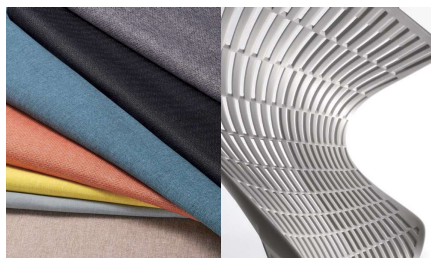
Back and seat tilt up to 20 degrees in the ideal angle, with the ankle serving as fulcrum.



The armrests can be slid forward and back, moved up and down, and rotated in and out using just one lever.

The lumbar support traces and supports the S-curve of the spine to ensure perfect posture and reduces the stress on your lower back.

\*Only on models with lumbar support.



A wide variety of materials and colors are available for more coordination at workplace.

